

# Concept Vegetation Management Plan

Australian Nursing Home Foundation Ltd  
25, 25A & 27 Bushlands Ave, Gordon



## Plan Outline

This concept plan outlines the strategies, direction and specifications to manage the native vegetation that will be retained within 25, 25A & 27 Bushlands Avenue, Gordon.

The vegetation to be retained includes;

- The native vegetation within the area defined as the conservation zone located at the northern end of the property. The vegetation within this zone includes Sydney Turpentine Ironbark Forest (STIF). The trees include T059, T110, T111, T109, T121, T122, T026, T027, T030, T031 & T068.
- The trees that are constituent to the STIF community namely T050, T105, T124, T125 & T126 & T037.
- Himalayan Cedar T014

Detailed survey plans have been prepared that illustrate the location of all trees to be protected and those to be removed.



A mixture of remnant STIF trees and landscaping at the rear of No. 27 Bushlands Avenue.

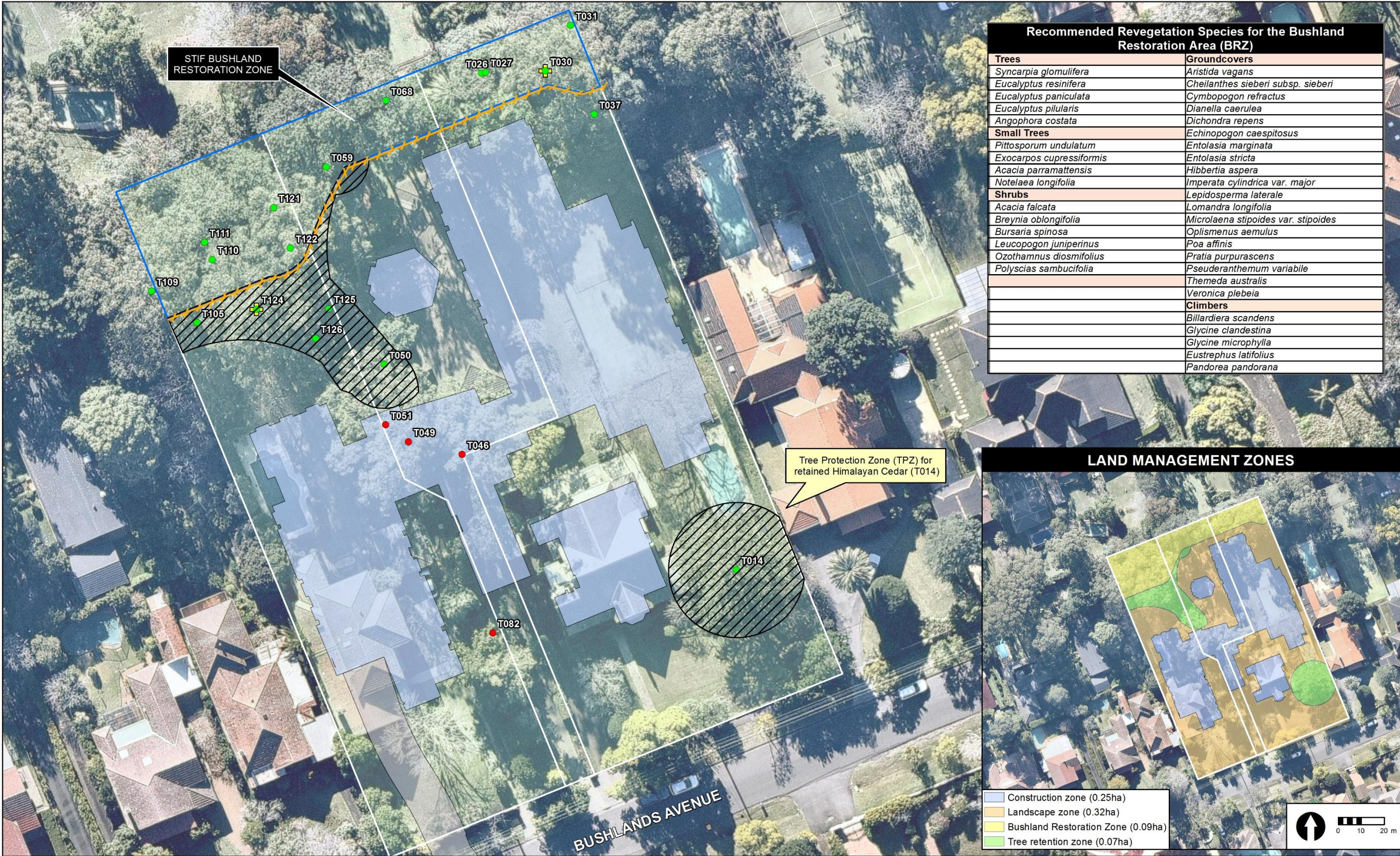
## Aim of the Plan

- Protect in perpetuity for the retained vegetation.
- Protect and enhance the vegetation towards the rear of the site commensurate with Sydney Turpentine Ironbark Forest (STIF), listed as an endangered ecological community (EEC) under the TSC Act, and critically endangered ecological community under the EPBC Act.
- Protect Tree T014 a Himalayan Cedar. This tree is part of the gardens associated with the heritage listed dwelling and will also be protected and retained insitu. This tree and its TPZ will be managed to ensure the root systems for these trees are not developed or impacted in any form such that harm could occur to the trees.

## Implementation Strategy

- A project ecologist should be appointed to manage the vegetation protection works prior to demolitions works being approved and continue until Council agree to the works having been successfully implemented.
- The conservation zone has been identified on this plan as the bushland restoration zone (BRZ) and shall be managed to restore the vegetation back to a healthy and diverse example of Sydney Turpentine Ironbark Forest (STIF). The understorey within the TRZ will consist of landscaped areas such as lawns and/or small garden beds.
- The area south of the BRZ will also retain STIF trees and this whole area including the individual TPZ's will be managed to ensure the root systems for these trees are not developed or impacted in any form such that harm could occur to the trees.
- This will require the instigation of practical and sensitive measures that will see the vegetation protected during the pre-construction 'set up' stage, the construction stage and the post construction stage will be managed for a period of 5-7 years.
- Works within the BRZ will largely include understorey revegetation with Sydney Turpentine Ironbark Forest species, protection of the plantings and weed control maintenance. Much of the existing landscape in the restoration zone is planted material with a combination of remnant EEC trees and planted trees. Most trees will be retained as part of the amenity and screening, however the ground layer species will gradually be replaced with grasses, low shrubs, herbs and ferns commensurate with STIF.
- As part of the process for management, only qualified personnel will be engaged to undertake works within the restoration zone, i.e. bushland regeneration or landscape management TAFE qualification staff (or equivalent) from a registered bushland regeneration company with previous experience managing similar vegetation types in northern Sydney.
- The proponent is to ensure that all vegetation management works such as vegetation removal, weed control works and vegetation restoration works are undertaken in accordance with the Project Ecologists instructions.





Recommended Revegetation Species for the Bushland Restoration Area (BRZ)	
Trees	Groundcovers
<i>Syncarpia glomulifera</i>	<i>Aristida vagans</i>
<i>Eucalyptus resinifera</i>	<i>Cheilanthes sieberi</i> subsp. <i>sieberi</i>
<i>Eucalyptus paniculata</i>	<i>Cymbopogon refractus</i>
<i>Eucalyptus pilularis</i>	<i>Dianella caerulea</i>
<i>Angophora costata</i>	<i>Dichondra repens</i>
Small Trees	
<i>Pittosporum undulatum</i>	<i>Echinopogon caespitosus</i>
<i>Exocarpos cupressiformis</i>	<i>Entolasia marginata</i>
<i>Acacia parramattensis</i>	<i>Entolasia stricta</i>
<i>Notelaea longifolia</i>	<i>Hibbertia aspera</i>
Shrubs	
<i>Acacia falcata</i>	<i>Imperata cylindrica</i> var. <i>major</i>
<i>Breynia oblongifolia</i>	<i>Lepidosperma laterale</i>
<i>Bursaria spinosa</i>	<i>Lomandra longifolia</i>
<i>Leucopogon juniperinus</i>	<i>Microlaena stipoides</i> var. <i>stipoides</i>
<i>Ozothamnus diosmifolius</i>	<i>Oplismenus aemulus</i>
<i>Polyscias sambucifolia</i>	<i>Poa affinis</i>
	<i>Pratia purpurascens</i>
	<i>Pseuderanthemum variabile</i>
	<i>Themeda australis</i>
	<i>Veronica plebeia</i>
	Climbers
	<i>Billardiera scandens</i>
	<i>Glycine clandestina</i>
	<i>Glycine microphylla</i>
	<i>Eustrephus latifolius</i>
	<i>Pandorea pandorana</i>

**Legend**

- Lot boundaries
- Proposed development
- Proposed road
- Habitat tree

3 strand post & plain wire fence

**Native trees onsite (22)**

- Removed (Development) (4)
- Retained (18)

**Vegetation Community**

- Landscaped gardens
- Bushland Restoration Zone (932m<sup>2</sup>)
- Tree retention zone (672m<sup>2</sup>)

Aerial source: Neamap

NOTE : Only native trees are shown on this figure. There are 105 other trees which have been planted.

0 10 20 m

Disclaimers: The mapping is indicative of available space and location of features which may prove critical in assessing the viability of the proposed works. Mapping has been produced on a map base with an inherent level of inaccuracy, the location of all mapped features are to be confirmed by a registered surveyor.

PROJECT & MXD REFERENCE

25, 25A, 27 Bushlands Avenue,  
Gordon  
A15096\_V001

DATE & ISSUE NUMBER

30/05/2017  
Issue 1

SCALE & COORDINATE SYSTEM

1:500 @A3  
GDA 1994 MGA Zone 56

TITLE

**Schedule 1 - Vegetation Management Plan**

Document Path: N:\GIS STORAGE\N Drive\A15096\_Bushland Ave\_Gordon\MXD\A15096\_V001.mxd

**LAND MANAGEMENT ZONES**

- Construction zone (0.25ha)
- Landscape zone (0.32ha)
- Bushland Restoration Zone (0.09ha)
- Tree retention zone (0.07ha)

0 10 20 m

